



NUMERHYD

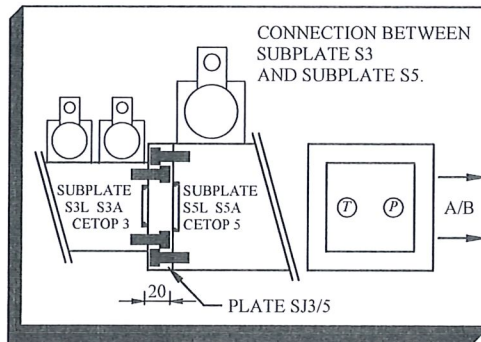
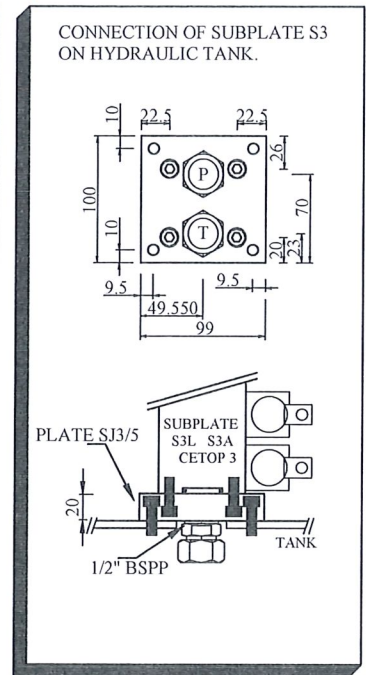
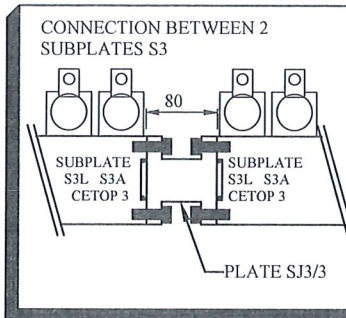
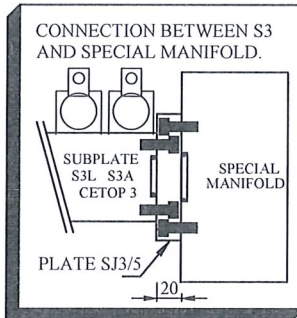
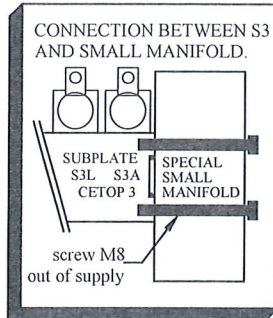
JUNCTION PLATE FOR MANIFOLD

SJ

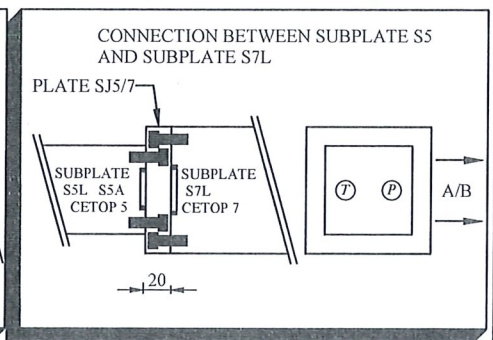
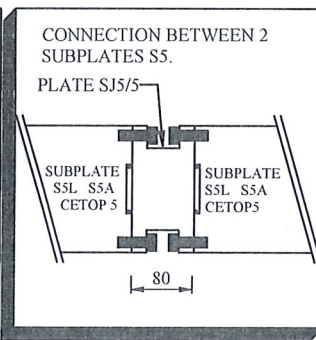
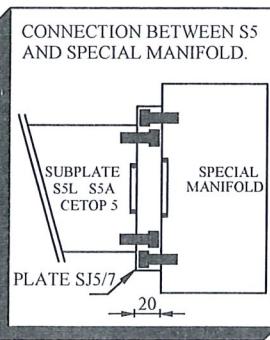
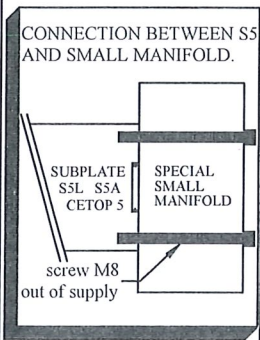
A24

- Service pressure 420 bar for steel - 300bar for aluminium alloy.
- Possibility to connect manifold S3 or S5 on special manifold.
- Possibility to connect several manifold S3 or S5.
- Achieve the continuity from P and T on each manifold.

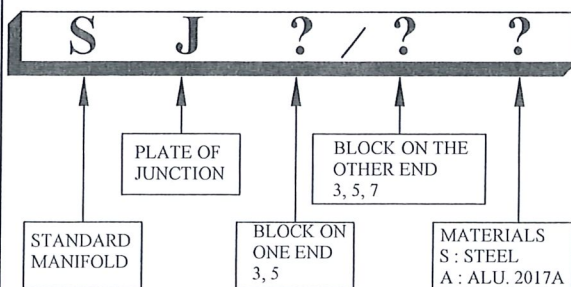
TO CONNECT MULTI-STATION CETOP 3 (S3L or S3A)



TO CONNECT MULTI-STATION CETOP 5 (S5L or S5A)



MODEL CODE



DIMENSIONS

MODEL	SIZE	O-RING Nbr delivered	screw CHC 12.9 M8*25 delivered	weight (kg)	
				STEEL	ALU
SJ3/3--	70*69*80	4 Ø25.07*2.62	8	3	1
SJ3/5--	100*99*20	2 Ø25.07*2.62	8	1.6	0.5
		2 Ø32.99*2.62			
SJ5/5--	100*99*80	4 Ø32.99*2.62	8	6.3	2.2
SJ5/7--	130*130*20	2 Ø32.99*2.62	12	2.6	0.9
		2 Ø40.95*2.62			